

**InVitroCYP™ H-class 25-donor Male Pooled  
Human Liver Microsomes, 10 mg  
Product Number: MX008064**

**Lot Number**      YZB

**Storage Conditions**      ≤ -70°C

**Test Results**

**Specification**

20-26 mg/mL protein concentration  
≥0.300 nmol/mg total P450 concentration

**Result**

23.3 mg/mL  
0.607 nmol/mg

**Lot Characterization Results**

**Assay**

**Result**

**Rate at K<sub>m</sub> concentration**

ECOD:	total rate of formation of 7-HC and metabolites	304 pmol/min/mg
UGT:	rate of formation of 7-hydroxycoumarin glucuronide	2348 pmol/min/mg
CYP1A2:	rate of formation of acetaminophen	288 pmol/min/mg
CYP2A6:	total rate of formation of 7-HC and metabolites	225 pmol/min/mg
CYP2B6:	rate of formation of hydroxybupropion	540 pmol/min/mg
CYP2C8:	rate of formation of desethylamodiaquine	2396 pmol/min/mg
CYP2C9:	rate of formation of 4'-methylhydroxytolbutamide	275 pmol/min/mg
CYP2C19:	rate of formation of 4'-hydroxymephenytoin	120 pmol/min/mg
CYP2D6:	rate of formation of dextrorphan	76.6 pmol/min/mg
CYP2E1:	rate of formation of 6-hydroxychlorzoxazone	689 pmol/min/mg
CYP3A4:		
	rate of formation of 6β-hydroxytestosterone	2044 pmol/min/mg
	rate of formation of 1-hydroxymidazolam	606 pmol/min/mg

**Caution:** This product was prepared from fresh human tissue. Treat all products containing human-derived materials as potentially infectious, as no known test methods can offer assurance that products derived from human tissues will not transmit infectious agents.

These products are for research use only. Do not use in animals or humans. These products have not been approved for any diagnostic or clinical procedures.

**Donor Demographics, as reported to BioreclamationIVT**

Age	Race	Cause of death	Height	Weight	Social history	Medical history	Serology testing					
							EBV	RPR	CMV	Hepatitis B	Hepatitis C	HIV
53	C	CVA	71"	121kg	ETOH: Rarely; Tobacco: 1/2ppd x 12yrs - quit 25 yrs; Drug use reported but unknown type/duration	CABG, saph vein graft, HTN x 8yrs w/meds, IDDM x 2 wks, NIDDM x 5 yrs. Meds: Coumadin, HTN meds, insulin, ameradane, Vicodin	Not reported	Neg	Pos	Neg	Neg	Neg
49	C	CVA	70"	251lb	ETOH: 1-2 beers/month; Tobacco: 1 ppd x 35 yrs; Drugs: marijuana in 20s.	Cardiac arrest, MVA hip fractures 32 yrs ago, depression, infertility treatments 10yrs ago, chest pain 2 yrs ago - hemopexis, infection from smoking, cold sore on lips. Meds: Lexapro.	Not reported	Neg	Pos	Neg	Neg	Neg
53	C	Anoxia; 2nd to MVA	72"	326lb	No ETOH or drug use; Tobacco: 0.5 ppd x 3 yrs, quit 30 yrs ago	Cardiac arrest, gall bladder removed, HTN x 3 yrs - compliant with meds. Meds: HTN meds, Mg Sulfate	Pos	Neg	Pos	Neg	Neg	Neg
33	C	Anoxia; 2nd Drug Intoxication	70"	200lb	ETOH: Binge drinker 24 beers/day when drinking; Tobacco: 1pk per 2weeks x 10yrs; Drugs: smoked marijuana, snorted cocaine, orally took speed, ecstasy. Took mushrooms and acid orally between 18-20y/o.	Hemorrhoids, Kidney stones 3 yrs ago. Meds: Klonopin, Lunesta, Ibuprofen, Dayquil, Nyquil on a regular basis.	IgM+	Neg	Pos	Neg	Neg	Neg
28	C	Head Trauma; 2nd to GSW	173cm	85kg	No ETOH or Tobacco; Drug: smoked marijuana	No medical history reported	IgG+	Neg	Pos	Neg	Neg	Neg
49	C	Head trauma; 2nd to MVA	66"	91kg	ETOH: occasional; Tobacco: 1-2 ppd x 20 yrs; no drug use.	Depression, bipolar disorder, chronic back pain, back surgery, high CDC, UTOX pos. for opiates and benzos; Meds: oxycodone.	IgG+	Neg	Pos	Neg	Neg	Neg

**Caution:** This product was prepared from fresh human tissue. Treat all products containing human-derived materials as potentially infectious, as no known test methods can offer assurance that products derived from human tissues will not transmit infectious agents.

These products are for research use only. Do not use in animals or humans. These products have not been approved for any diagnostic or clinical procedures.

Age	Race	Cause of death	Height	Weight	Social history	Medical history	EBV	RPR	CMV	Hepatitis B	Hepatitis C	HIV
37	C	Anoxia	4'10"	154lb	ETOH: >2 drinks/day x 10yrs - wine/vodka; no tobacco or drug use	Asthma x 33 yrs	Neg	Neg	Pos	Neg	Neg	Neg
66	C	SISGW to Head	6'0"	218lb	ETOH: 2-3 drinks/day x 40yrs; no tobacco or drug use	CABG x 3, HTN x 10+ yrs, Type II Diabetes x 2yrs	IgG+	Neg	Pos	Neg	Neg	Neg
47	C	CVA, Intracranial Hemorrhage	183cm	124kg	ETOH: 1-2 beers very rarely x 20 yrs; Tobacco: 1ppd x 20 yrs; no drug use	Factor 5 Leiden mutation	IgG+	Neg	Pos	Neg	Neg	Neg
38	C	Anoxia (Suicide)	177 cm	77.4kg	ETOH: 3 - 6 cans/day; Tobacco: daily smoker; Drugs: Daily THC, cocaine 5 yrs ago, Meth prior to admit - IVDA and smoked.	No history reported	Not reported	Neg	Neg	Neg	Neg	Neg
44	C	Anoxia 2nd to Asphyxiation	69"	168lb	ETOH: Beer/vodka 4-5 x/wk, unk amt; Tobacco: 1ppd x 15 yrs; Drugs: Steroids x 1 yr - 19 yrs ago, cocaine in 20s-30s, THC in high school	Surgery to repair eye socket. Took pain meds - oxycodone, oxycontin, and others.	IgG+	Neg	Pos	Neg	Neg	Neg
44	H	CNS tumor	173cm	110kg	No ETOH, Tobacco or drug use	No medical history	Not reported	Neg	Pos	Neg	Neg	Neg
66	C	CVA; 2nd to ICH	69"	173lb	Tobacco: 1/2 ppd x 50yrs - quit 2 mos ago; no ETOH or drug use	Acute renal failure/acute tubular necrosis dx 1 mo ago - following dental sx, dialysis last 12mo, Afib. Meds: dialysis 3x/wk, MVI, Fish Oil, Aspirin, Vit D, Coumadin	Not reported	Neg	Pos	Neg	Neg	Neg
52	C	Anoxia	5'10"	85.1kg	ETOH: 8-10 beers/day; Tobacco: 1 pack per week; Drugs: Marijuana-smoked, Cocaine	No medical history	Not reported	Neg	Neg	Neg	Neg	Neg

**Caution:** This product was prepared from fresh human tissue. Treat all products containing human-derived materials as potentially infectious, as no known test methods can offer assurance that products derived from human tissues will not transmit infectious agents.

These products are for research use only. Do not use in animals or humans. These products have not been approved for any diagnostic or clinical procedures.

Age	Race	Cause of death	Height	Weight	Social history	Medical history	EBV	RPR	CMV	Hepatitis B	Hepatitis C	HIV
49	C	Other: Cardiac Arrest	5'11"	92.8kg	ETOH: 4 beers 4-5 days/week x 27 yrs; Tobacco: 2 ppd; no drug use.	No medical history	Not reported	Neg	Pos	Neg	Neg	Neg
49	H	ICH	5'9"	268lb	No ETOH, Tobacco or Drug use	Hypertension	IgG+	Neg	Pos	Neg	Neg	Neg
53	C	ICH	6'1"	98kg	ETOH: 2-3 beers/week; Tobacco: previous tobacco chewer; no drug use.	Hypertension	IgG+	Neg	Pos	Neg	Neg	Neg
57	C	ICH/Stroke	6'1"	231lb	ETOH: Daily at least 1 - beer, bourbon, wine since teens; Tobacco: Smoked for 8yrs - quit 14yrs ago, smoked cigars 1 time a year; Drugs: Experimented with cocaine, mushrooms, acid and marijuana in high school	Asthma - inhaler rarely used, Cardiac ablation for SVT 7 yrs ago, HTN 7 yrs ago - unknown treatment/compliance	IgG+	Neg	Pos	HBsAb+	Neg	Neg
53	C	Anoxia	72"	90.9kg	ETOH: a couple of drinks 2 -3 nights/wk; Tobacco: quit 10 yrs ago; Drug: Marijuana and Cocaine past 3 years.	Asthma	IgG+	Neg	Pos	Neg	Neg	Neg
53	C	Anoxia, Cardio-vascular	68"	64.2kg	ETOH: several beers/days x 37 yrs, hard liquor past 2 years; Tobacco: 1/2ppd x 12 yrs, 1-2 cig/day past 8 yrs; Drug: non-prescribed pain medication, cocaine many yrs ago, occasional marijuana 30 yrs ago.	No medical history	IgG-	Neg	Pos	Neg	Neg	Neg
64	C	CVA	6'0"	229lb	ETOH: 1 beer a year; Tobacco: 1ppd x 30yrs - quit 18yrs ago; no drug use.	COPD, CAD, CHF, LVH, MI, HTN x 15yrs, Diabetes x 15yrs.	IgG +	Neg	Pos	Neg	Neg	Neg

**Caution:** This product was prepared from fresh human tissue. Treat all products containing human-derived materials as potentially infectious, as no known test methods can offer assurance that products derived from human tissues will not transmit infectious agents.

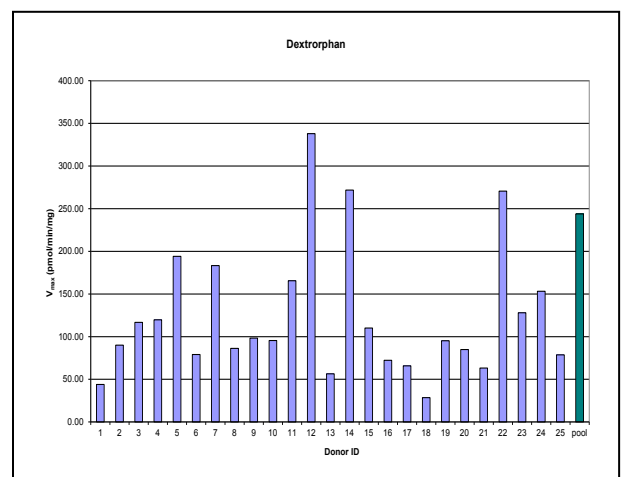
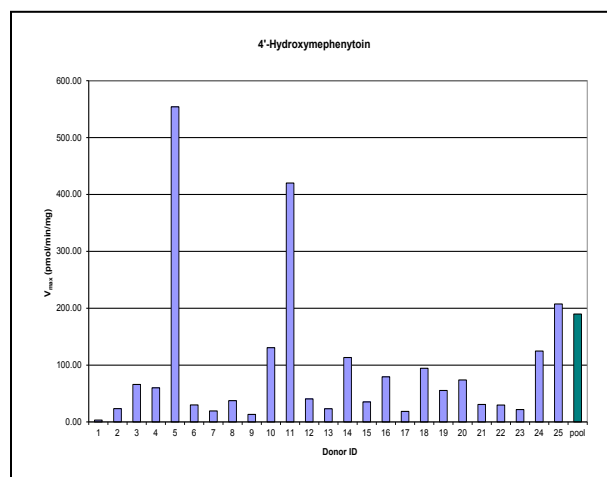
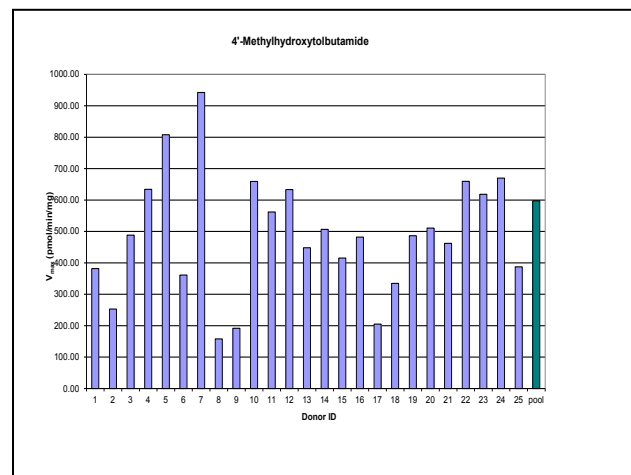
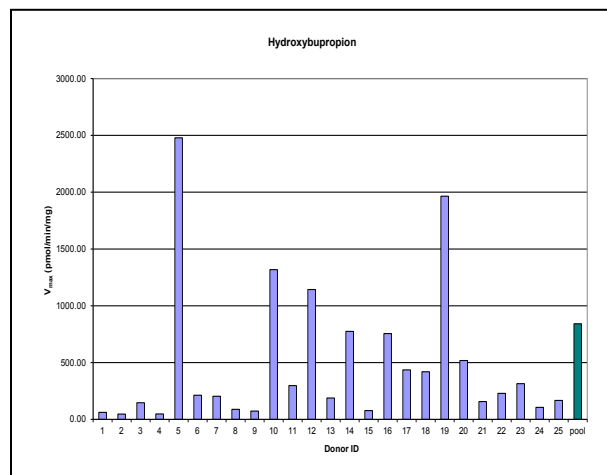
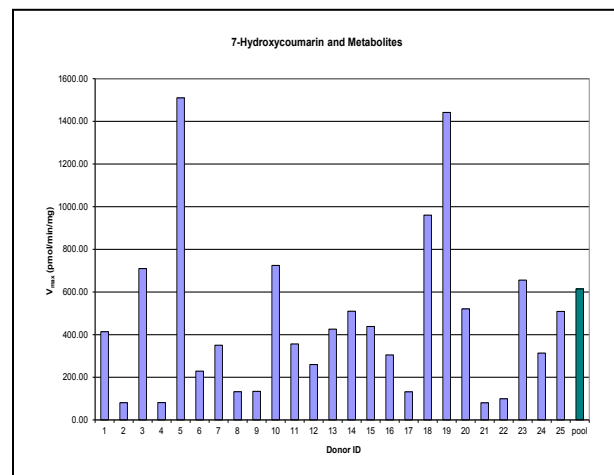
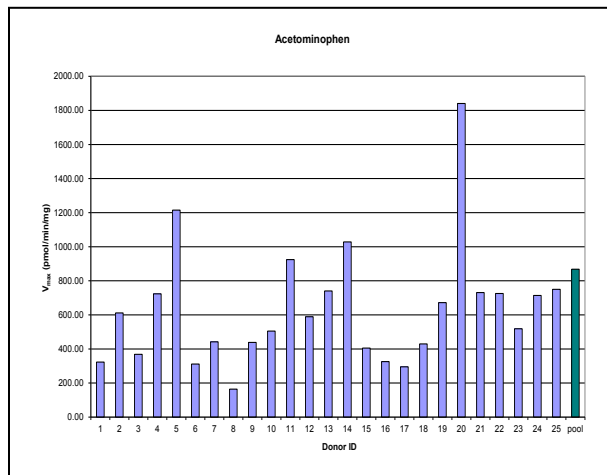
These products are for research use only. Do not use in animals or humans. These products have not been approved for any diagnostic or clinical procedures.



Age	Race	Cause of death	Height	Weight	Social history	Medical history	EBV	RPR	CMV	Hepatitis B	Hepatitis C	HIV
51	C	CVA/Stroke 2nd to ICH	70"	108kg	ETOH: 2-3 beers/wine 2- 3x/wk x 30yrs; Tobacco: cigars last 5 years; Drugs: Cocaine abuse	HTN x 10yrs - non-compliant w/meds last few months. Meds: HTN meds	IgG +	Neg	IgG +	Neg	Neg	Neg
41	H	Head Trauma	6'	97kg	ETOH: 5 drinks/day 4 times per week - Liquor/tequila 10 oz once per month; Tobacco: 1ppd x 10 yrs - quit 10 yrs ago; no drug use.	Hypertension - unknown duration	Not reported	Not reported	Pos	Neg	Neg	Neg
48	C	Anoxia 2nd to Cardio- vascular	73"	123kg	Tobacco: 1 ppd; no ETOH and drug use.	HTN x 5 yrs. Meds: Lisinopril (noncompliant)	IgG+	Neg	Pos	Neg	Neg	Neg
35	C	Anoxia	71"	82kg	ETOH unknown use; Tobacco – smoker; Drugs: Polysubstance abuse.	TBI (traumatic brain injury) from MVA with partial craniectomy 5 months ago, seizures, spinal fusion sx. Meds: Depakote	IgG+	Neg	Neg	Neg	Neg	Neg

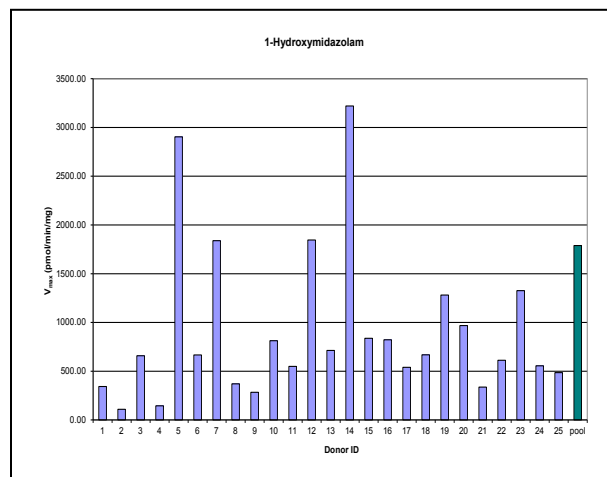
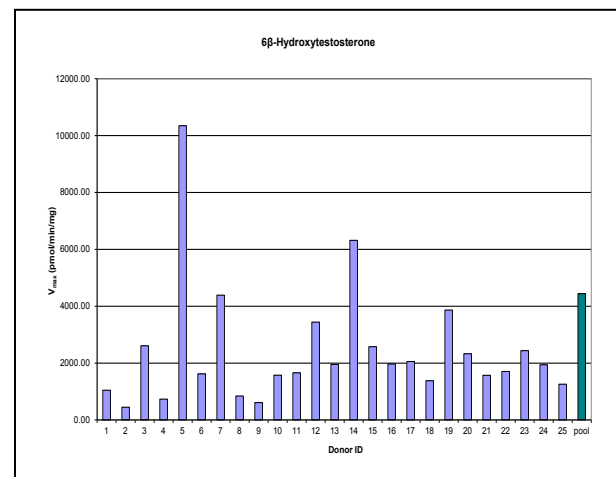
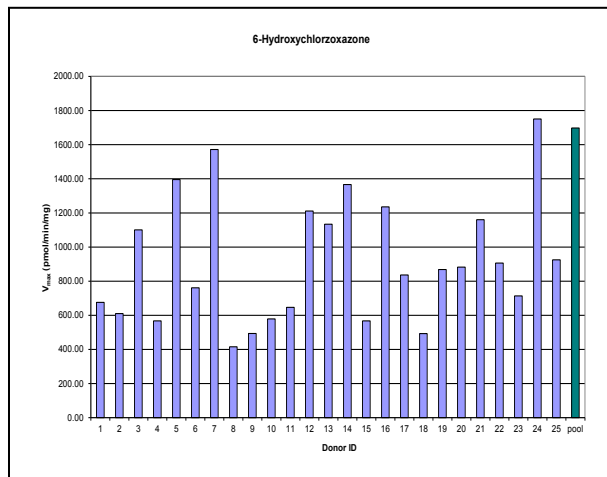
**Caution:** This product was prepared from fresh human tissue. Treat all products containing human-derived materials as potentially infectious, as no known test methods can offer assurance that products derived from human tissues will not transmit infectious agents.

These products are for research use only. Do not use in animals or humans. These products have not been approved for any diagnostic or clinical procedures.



**Caution:** This product was prepared from fresh human tissue. Treat all products containing human-derived materials as potentially infectious, as no known test methods can offer assurance that products derived from human tissues will not transmit infectious agents.

These products are for research use only. Do not use in animals or humans. These products have not been approved for any diagnostic or clinical procedures.



**Caution:** This product was prepared from fresh human tissue. Treat all products containing human-derived materials as potentially infectious, as no known test methods can offer assurance that products derived from human tissues will not transmit infectious agents.

These products are for research use only. Do not use in animals or humans. These products have not been approved for any diagnostic or clinical procedures.